

# ADEPT Conference 2016

Thursday 24 November 2016

**Dr Martin Reeves**  
**Chief Executive, Coventry City Council**  
**Chief Executive, WMCA**



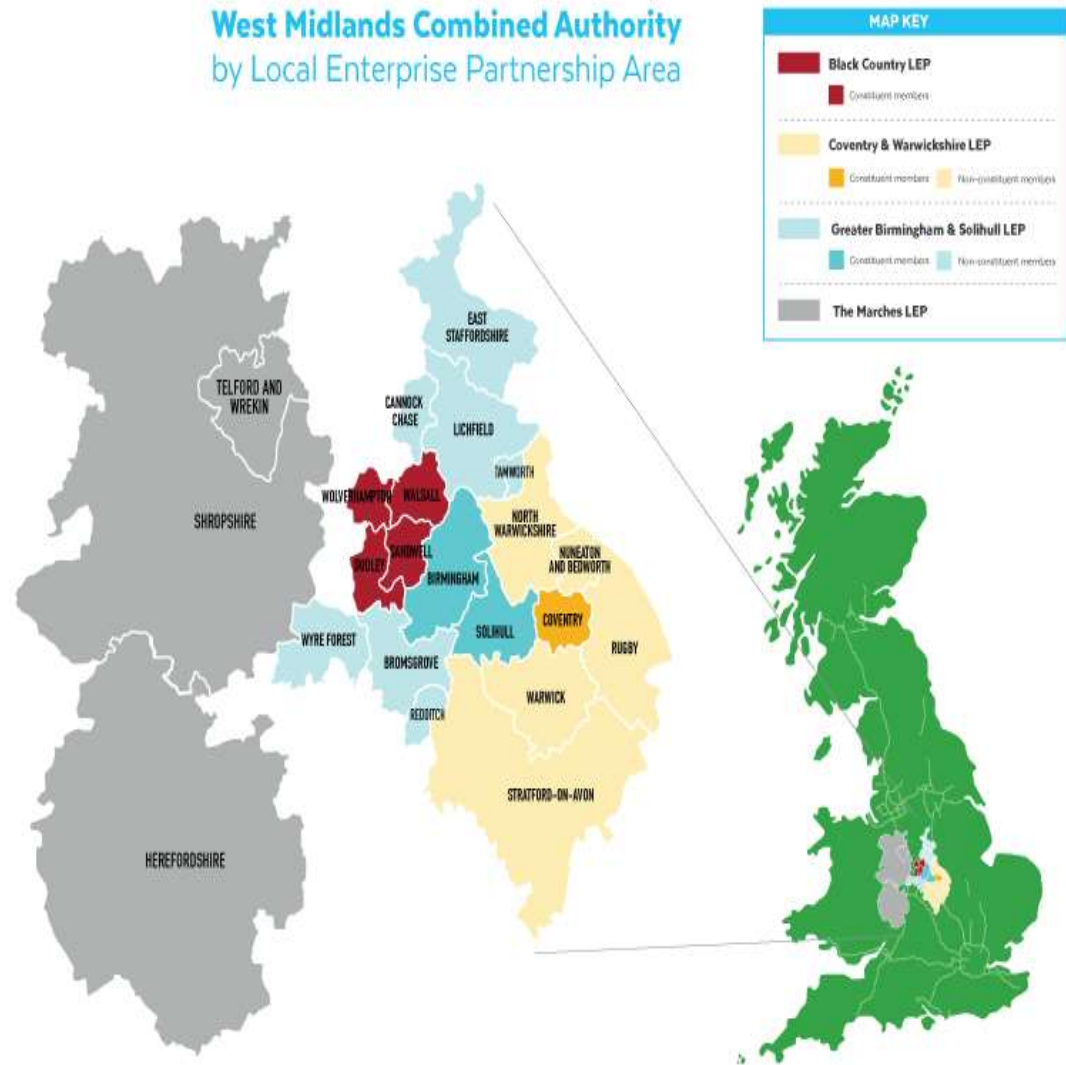
**WEST MIDLANDS**  
COMBINED AUTHORITY

# Scale of ambition

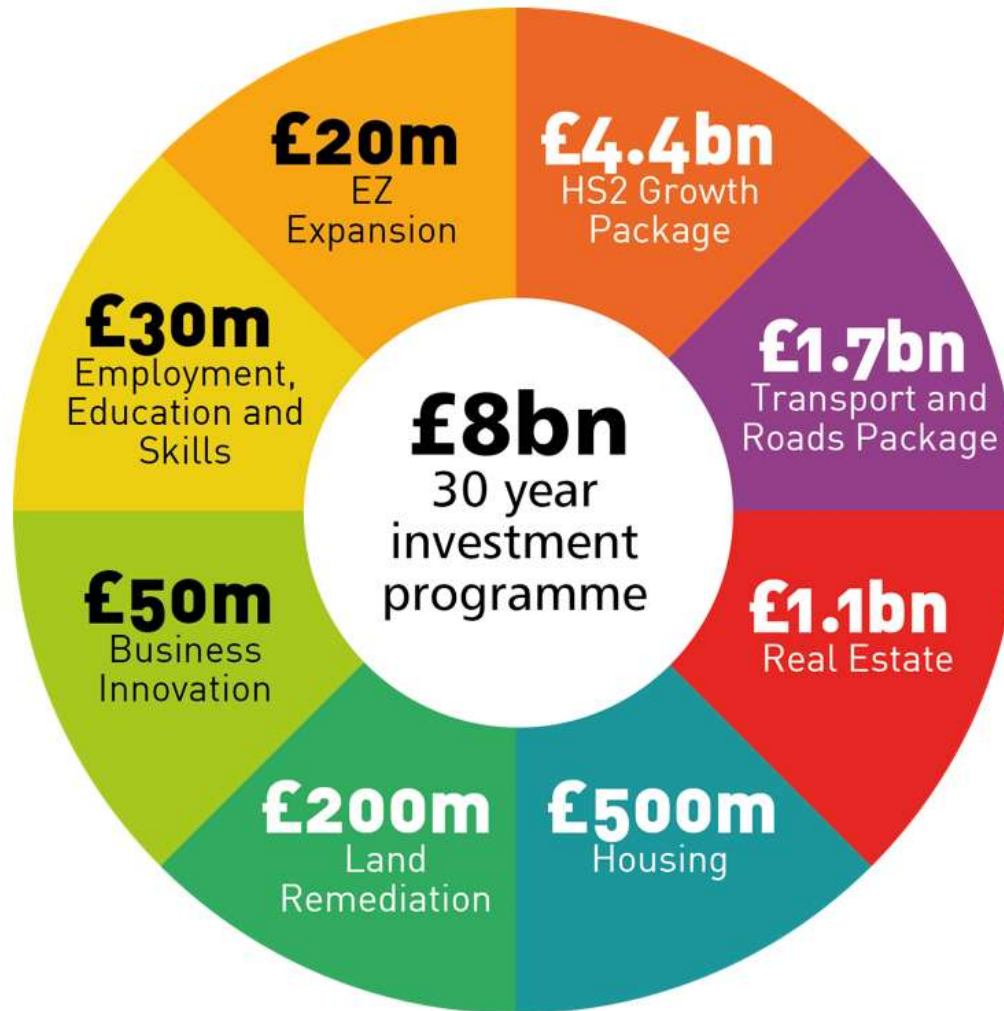
## 3 LEPs – Key Benefits

- 4 million people
- £80bn GVA
- 20 local authorities
- 90% self-containment

West Midlands Combined Authority  
by Local Enterprise Partnership Area



# £8bn INVESTMENT PACKAGE



Underpinning - WMCA Public Service Reform Agenda  
Key link to the devolved 19+ Adult Skills Budget

**Martin Reeves**  
*Chief Executive*

Telephone: 024 7683 3232

Mobile: 07852 976 199

E-mail: [martin.reeves@coventry.gov.uk](mailto:martin.reeves@coventry.gov.uk)

Twitter: [@martinreeves](https://twitter.com/martinreeves)



**Coventry City Council**  
Council House  
Earl Street  
Coventry, CV1 5RR  
[www.coventry.gov.uk](http://www.coventry.gov.uk)



**WEST MIDLANDS**  
COMBINED AUTHORITY

**Martin Reeves**  
Chief Executive

07852 976199

[Martin.Reeves@coventry.gov.uk](mailto:Martin.Reeves@coventry.gov.uk)

[www.westmidlandscombinedauthority.org.uk](http://www.westmidlandscombinedauthority.org.uk)



**@martinreeves**



**WEST MIDLANDS**  
COMBINED AUTHORITY

Find out more at [www.westmidlandscombinedauthority.org.uk](http://www.westmidlandscombinedauthority.org.uk)