



Moorside - Powering Forward

John McNamara,
Head of Corporate Communications

CECA NW Infrastructure Vision

4th October 2016, Lancashire County Cricket Club

securing low carbon energy
for a new generation

THE NUGEN LANDSCAPE

Powering ahead in West Cumbria



Supply Chain

Up to **60%** of the project could be supplied by UK companies



The UK's nuclear heartland

West Cumbria is a **£2.8 billion** economy... with over 70-years' experience in nuclear... more than one-third of the UK's civil nuclear sector are based in the area

Directly employing around **15,000** people



Transport

Rail and sea focussed strategy with the aim of taking thousands of HGV movements off the region's roads



Electricity network

Delivering electricity to power six million homes...

7% of the UK's electricity needs



Community

NuGen has supported 20 community projects with funding worth more than **£40,000**

Creating a positive lasting legacy for the communities in which we operate



Socio-economic benefit

Moorside will be the largest ever private sector investment in the region



Education

NuGen's Bright Sparks – helping to inspire future careers in electricity generation



Environment

Commitment to mitigate impact on the environment

Supporting more than 35 environmental improvement projects



Moorside

3 AP1000 nuclear reactors

The UK's largest nuclear power station... up to **3.8GW** of affordable low-carbon electricity

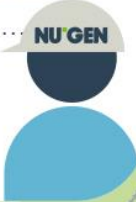
Operating life of **60** years



Jobs

Creating **14-21K** jobs over the project lifetime

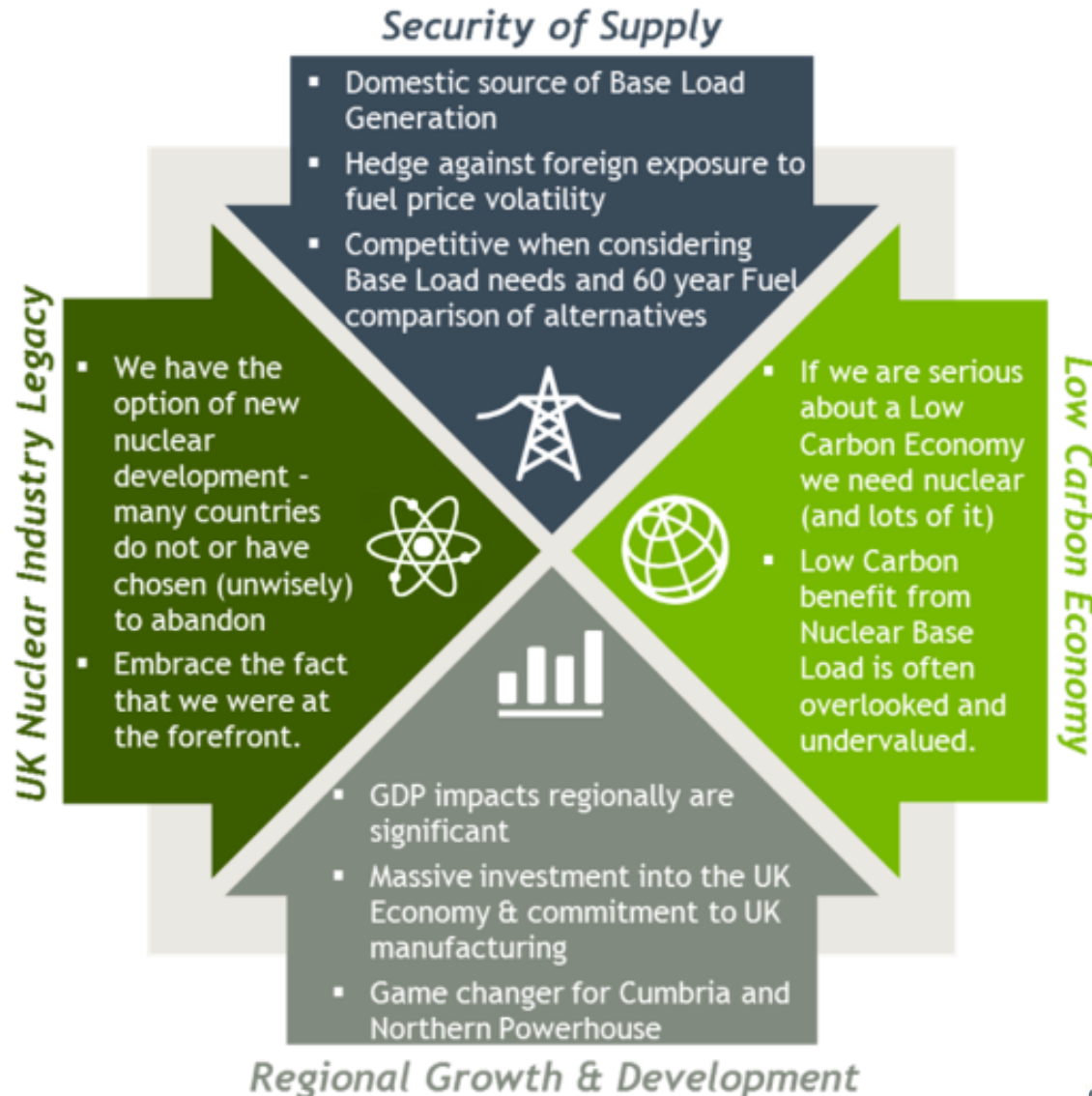
sustaining over **1,000** jobs during operation



Key

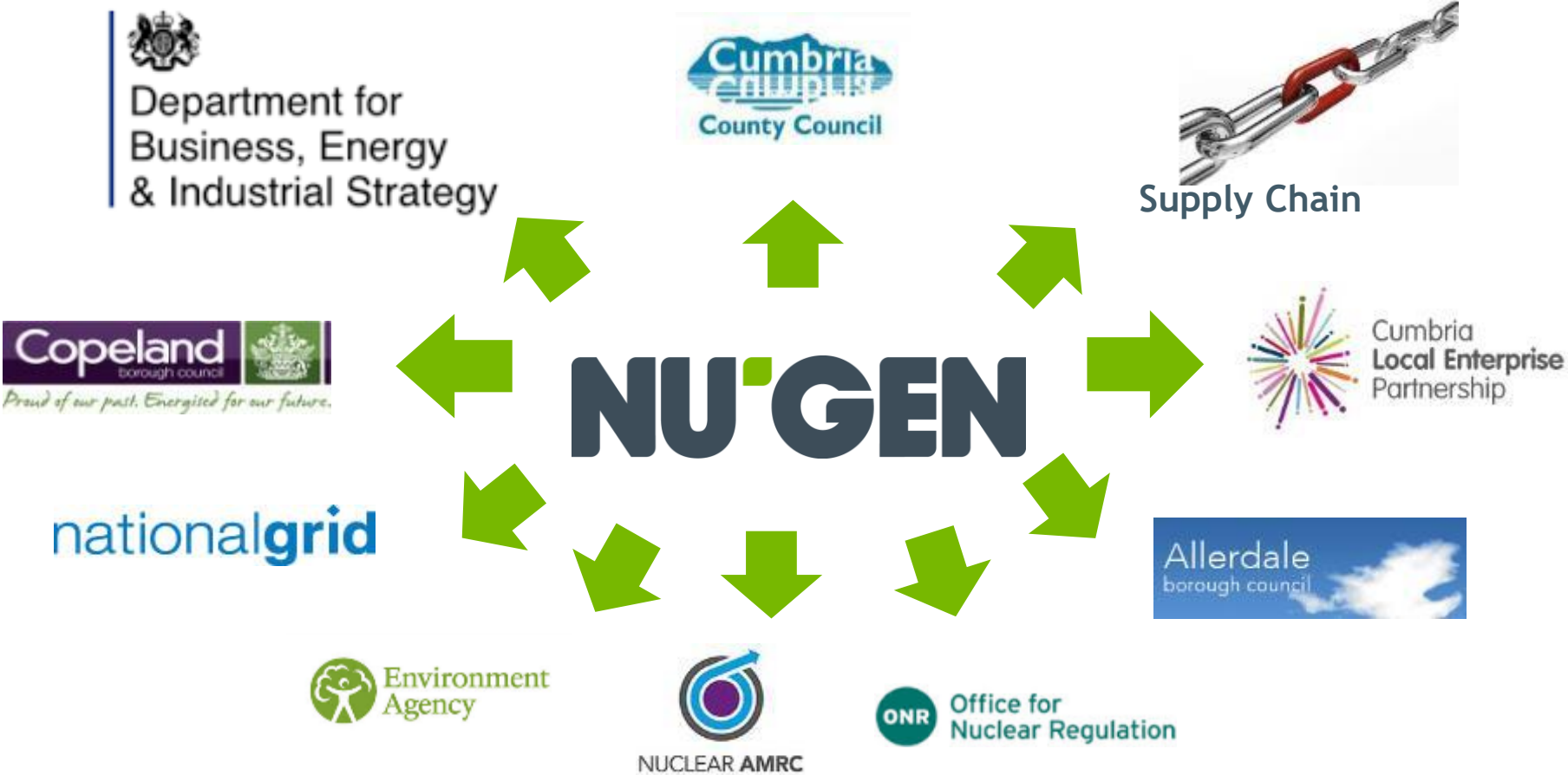
- Associated developments
- Towns
- ▲ Point of interest

Why is Nuclear New Build Important to the UK?



NOT PROTECTIVELY MARKED

Stakeholder Engagement



NOT PROTECTIVELY MARKED



Delivering Economic, Social & Industrial change



Delivery of nationally significant critical infrastructure must ensure wider regional benefits.



Regional economies play an important part of that critical national infrastructure but they have not always prospered in those communities closest to those developments.



NuGen committed to taking a different approach; engaging in social, community and education initiatives which cause positive, optimistic and entrepreneurial levels of engagement within those communities closest to Moorside.



Combining public and private interests towards efforts to transform and regenerate local economies is necessary to effecting sustainable change.



Enhancing the quality of the social and community conditions is essential to attracting newcomers to the workforce in West Cumbria - a common challenge - not just for NuGen.

We are taking a layered approach to tackling the workforce challenge



Train and develop the under and unemployed locally to take advantage of the employment opportunities during both construction and operational phases.

Develop exciting career path prospects for young Cumbrian talent to retain as much talent within Cumbria.

Make the NuGen opportunity accessible to as wide a regional workforce as possible through enhanced infrastructure.

Attract national skills to Moorside to fill remaining gaps, ensuring NuGen offering is competitive.

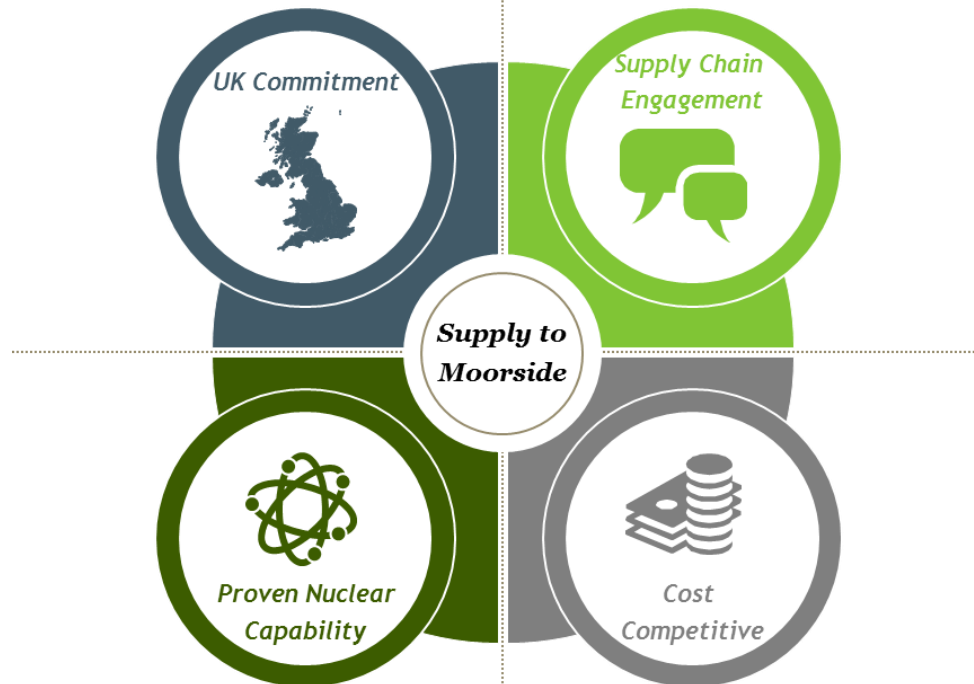
Supplement National skills gaps with wider international talent to ensure on time delivery of the project.

UK Industrial Development Potential

A sustainable nuclear new build programme offers a significant opportunity for wider UK industrial development to support that growing domestic need

We are committed to maximising the potential for UK companies to participate in the supply chain. Up to 60% of our Moorside Project could be accessible to the UK supply chain.

We are actively supporting supply chain forums to ensure the opportunity is well understood. We are encouraging companies to participate in Fit4Nuclear programmes to improve their readiness to secure business in this growth area.




Certain 'mission critical' components will come from proven supply chain expertise to ensure construction schedule can be maintained and using lessons learned from AP1000® fleet experience.

Ultimately we will be driven to secure a cost competitive solution with demonstrable track record from supply chain competition - UK business can and should compete.


Sustainable Legacy Solutions for Local Communities

NuGen is focused on delivering sustainable solutions across local communities:




Rail based strategy will result in additional investments and improvements in coastal rail network and additional stations across Whitehaven

01
Rail Links



Worker accommodation solutions integral to long term housing improvements for the community. Utilisation/refurbishment of social housing stock and new build developments integral to our plan. Conversion of worker into family homes after use.

02
Housing




Opportunity for secondary community benefits surrounding recreational facilities and other amenities

03
Amenities



Increased commerce in and around Whitehaven to encourage regeneration of town centre and new business opportunities

04
Regeneration



Design focus on building and landscaping, actively engaged with architectural communities. Opportunity to be creative and iconic in our approach.

05
Iconic

Investors Suppliers
Competitiveness
The Deal
Cost Discovery
Low-carbon
Shutdowns
Technology
Clean Air
Licensing
Generation Mix
National UK
Need
Structure
Timeline
Content
Security of Supply
Delivery
Certainty
Negotiation

NOT PROTECTIVELY MARKED

NU'GEN

MOORSIDE - POWERING THE NORTH

For more information visit our
website

www.nugeneration.com

or email

info@nugeneration.com